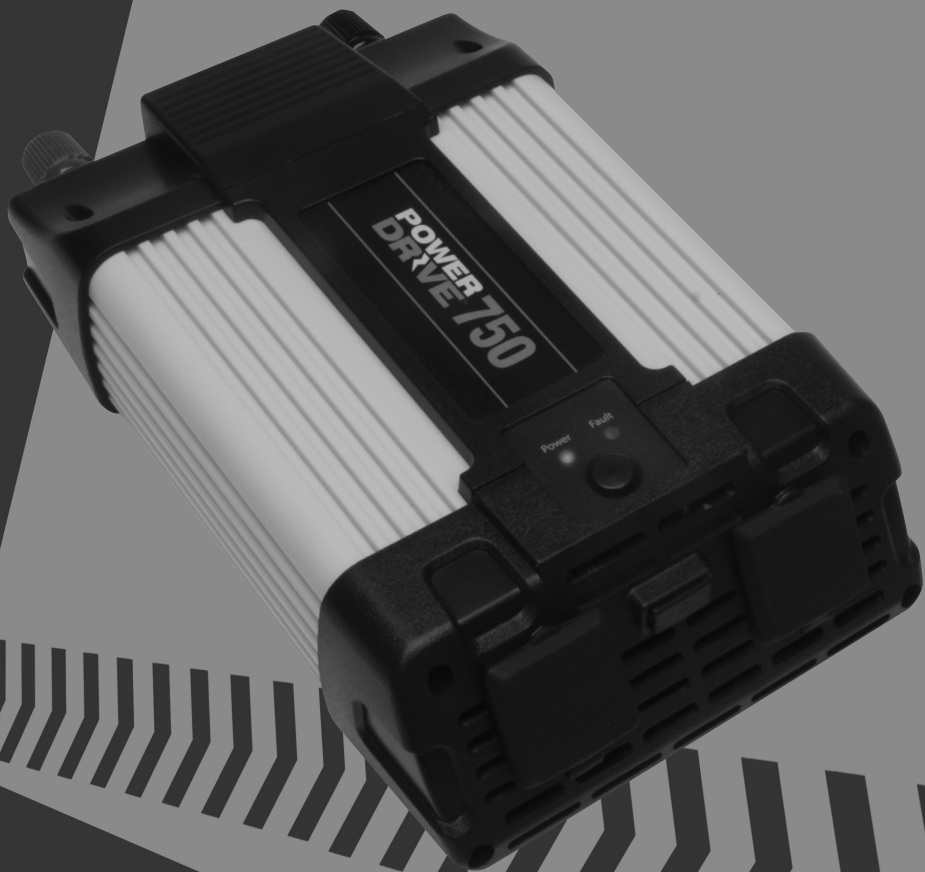


POWERDRIVE™ POWER
powerdriveinverters.com **INVERTERS**

Owner's Guide

Please Save for Future Reference



**POWER
DRIVE 750**

**750 Watt
DC to AC
Power Inverter**

Thank you for purchasing the POWERDRIVE750 power inverter, a high performance solution to using household power while on the road. Please read and understand all of the information provided in this manual before operating or installing. If properly used, the inverter will give you years of reliable service providing AC power for TVs, computers, appliances, stereos and power tools. For safe and optimum performance, the inverter must be installed and used properly. Carefully read and follow the guidelines in this manual giving special attention to the CAUTION and WARNING statements. Keep this manual for reference should troubleshooting be necessary.

CAUTION statements provide information that could damage your inverter or equipment connected to it.

WARNING statements provide information on conditions that could result in personal injury or loss of life.

WARNING: Incorrect installation or miss-use of the RPPD750 could result in personal injury or damage to the inverter and/or attached equipment. Read and follow the directions in the owner's manual. The ROADPRO RPPD750 produces the same potentially lethal AC power as normal household outlets. It is suggested that you treat it with the same respect that you would any AC outlet.

WARNING: SHOCK HAZARD, KEEP AWAY FROM CHILDREN.

DO NOT insert any foreign objects into the RPPD750's outlets, vents or fan openings.

DO NOT expose the RPPD750 to rain, water or any other liquids.

DO NOT connect the RPPD750 to utility power distribution systems or branch circuits.

WARNING: HEATED CASE AND SURFACE.

The case to the RPPD750 may become very warm under high power operation reaching 140°F. Be sure that there is at least 4 inches of unobstructed air space around the entire surface of the inverter at all times. During use, DO NOT place materials that could be damaged by heat on or near the RPPD750.

WARNING: EXPLOSION HAZARD.

DO NOT operate the RPPD750 near flammable fumes or gases such as the bilge of a gasoline power boat or near propane tanks.

DO NOT operate the RPPD750 in an enclosed area that contains automotive type lead-acid batteries. This type of battery emits explosive hydrogen gas which can be ignited by sparks.

CAUTION:

DO NOT connect the RPPD750 to live AC power circuits. Damage to the inverter will result even if the power switch is in the OFF position.

DO NOT connect any AC device which has its neutral conductor connected to ground.

DO NOT expose the RPPD750 to air temperatures in excess of 104°F.

DO NOT use the RPPD750 on the following items:

1. Small battery-operated appliances such as flashlights, razors and nightlights that can be plugged directly into an AC outlet to recharge.
2. Certain battery chargers for battery packs used in hand power tools. These chargers will have a "Warning Label" indicating that dangerous voltages are present at the battery terminals.

RPPD750 Waveform Output:

The output waveform of your RPPD750 is referred to as "square wave" or "modified sine wave." Some very sensitive electronic equipment and some medical equipment (listed below) may not operate satisfactorily on "square wave" or "modified sine wave." It is a stepped waveform designed to have characteristics similar to the pure sine wave shape of utility power. A waveform of this nature is suitable for most AC loads (including linear and switching power supplies used in electronic equipment, transformers and motors).

The problems described above, do not occur with most battery-operated equipment. The vast majority of these items use a separate charger or transformer that plugs into the AC outlet and produces a low voltage output. If the label on your adapter states that it produces a low voltage (AC or DC) output (30 volts or less) then the RPPD750 will operate the item safely. Some of the following items may not operate properly on a "square wave" inverter. If you have any questions, contact the device's manufacturer.

- Laser printers, photocopiers, magneto-optical hard drives.
- Certain laptop computers.
- Some fluorescent lights with electronic ballasts.
- Power tools employing "solid state" power or variable speed control.
- Some battery chargers for cordless tools.
- Digital clocks with radios.
- Medical equipment such as oxygen concentrators, nebulizers, and CPAP machines.

INSTALLATION:

Selecting a suitable location

The RPPD750 must be installed in an area that meets the following requirements in order to operate safely and provide optimum performance:

1. **DRY:** DO NOT expose the unit to moisture.
2. **COOL:** Ambient air temperature should be between 32°F and 104°F. Cooler areas are best.
3. **VENTILATION:** Allow at least 4 inches of clearance above and around all sides and top of the unit for proper cooling.
4. **SAFE:** DO NOT install the RPPD750 in a compartment with batteries or flammable liquids or vapors such as gasoline or propane.
5. **CLEAN:** DO NOT install the RPPD750 in an area that is prone to dirt, dust or debris. This is especially important if used in a work environment.

Connecting DC Power Cables: Red +, Black – (included with inverter)

1. Reversing the polarity of the cables (positive to negative) will result in damage to the RPPD750 and will void the warranty.
2. For safety, disconnect the RPPD750 from the battery when not in use.
3. Use grommets to protect cables from bare metal edges when installing through firewalls or bulkheads.
4. Use only the cables supplied with this unit. Using longer cables will require a thicker cable to reduce or minimize voltage drop to inverter.

The power cable is very important to the performance of the inverter. Because the inverter has a low voltage, high current input, low resistance wiring is essential between the battery and inverter. This is so it can deliver the maximum amount of energy to the load. Keep the cable length as short as possible, no more than four feet (one and a half meters). This will keep the voltage drop to a minimum. If the cable has too much voltage drop, the inverter may shut down when drawing higher currents because voltage at the inverter may drop below 10.5 volts. If you must use longer cables (up to 10 feet), choose thicker cables, such as # \emptyset AWG, and trim the ends of the cable to fit the terminals.

Connect the Power Cables to the Inverter:

1. Press the Power Button on the inverter to the off position.
2. Connect cable to the Power Input Terminals on input end of the inverter. The red terminal is positive (+) and the black terminal is negative (-). Unscrew the terminal on the inverter and install the appropriate color (black to black & red to red) ring-terminal of the cables and tighten the screws to clamp the wires securely.

NOTE: It is a good idea to check and tighten these screws from time to time. They can become loose by vibrations or thermal cycling. Loose connectors result in excessive voltage drop and may cause overheated wires and melted insulation.

Connect the Power Cables to the Battery:

1. Connect the cable from the Negative Terminal (Black) of inverter to the Negative Terminal of the battery.
2. Connect the cable from the Positive Terminal (Red) of the inverter to the Positive Terminal of the battery. You might observe a spark when you make this connection since current can flow to charge capacitors in the inverter.

CAUTION: Reversing the polarity of these cables (positive to negative) will result in damage to the RPPD750 and will void the warranty.

3. The inverter is now ready to deliver AC power to your loads. Press the Power Button to on. If several loads are to be operated by the inverter, turn them on separately, after the inverter has been turned on. This will ensure that the inverter does not have to deliver the starting currents required for all the loads at once.

CAUTION:

Connect the RPPD750 to batteries with a normal output of 12-volts DC only. 6-volt batteries do not supply enough voltage, and a 24-volt battery supplies too much voltage and will damage the RPPD750. Never work on the AC wiring without first physically disconnecting the DC connections.

CAUTION:

Never disconnect the DC cables from the inverter without first disconnecting the cables from the battery or potentially lethal electricity will be left exposed.

NOTE: The Power Button turns the control circuit in the inverter on and off. It does not disconnect power from the inverter. When the button is in the off position, the inverter draws no current from the battery. When it's in the on position, but no power is being supplied to a load, the inverter draws less than ½ amp from the battery. This is low current draw. It would take more than a week to discharge a 100 ampere hour battery at this rate depending on the age of the battery. For safety disconnect the RPPD750 from the battery when not in use.

Operating Indicators:

Red and green LED Indicators on top of your inverter will show the status of the inverter and alert you to conditions that could cause the inverter to shut down.

Current Overload Protection:

If the inverter is overloaded, it will shut down to protect itself. The red LED will illuminate to indicate Overload Protect. To restore normal operation, disconnect the excessive load and turn the unit Off and On again using the Power Button.

CAUTION: Although the inverter has protection against over-voltage, it may still be damaged if the input voltage were to exceed 16 volts.

Low Voltage Protection:

If the DC input voltage drops below 11 volts the red LED will light up to indicate Low Voltage Protection, and an audible alarm will sound, but the unit will continue to operate. If the input voltage drops to 10.5 volts or less, the inverter will shut down to protect itself, the red LED will be lit and the alarm will continue. To restore normal operation; return the DC input voltage to at least 12 volts, the inverter will automatically return to normal operation.

High Voltage Protection:

If the DC input voltage rises above 15 volts, the inverter will shut down to protect itself, the red LED will light up to indicate a high voltage protection, and an audible alarm will sound. To restore normal operation, return the DC input voltage to less than 15 volts, the inverter will automatically return to normal operation.

Over Temperature Protection:

If the internal inverter temperature rises above the alarm threshold, an audible alarm will sound to indicate over temperature protection, and the unit will continue to operate. If the internal temperature rises to 104°F, the inverter will shut down to protect itself.

NOTE: Internal inverter temperature can rise due to being operated in a high heat environment or due to the fan or vents being blocked during operation (even in relatively cool outside air). To restore normal operation, turn the unit off and allow it to cool. The inverter will automatically return to normal operation after it has cooled.

USB Outlet; The USB outlet will supply 5 volts at 500ma to charge and power cell phones, iPods® and other small electronics.

Operating Limits

Power Output:

The inverter can deliver 750 watts for about 60 minutes. The inverter must cool for 15 minutes before it can resume operation at 750 watts.

NOTE: The wattage rating applies to resistive loads. The inverter will operate most AC loads within its power rating. Some induction motors used in freezers, pumps, and other motor-operated equipment require very high surge currents to start. The inverter may not be able to start some of these motors even though their rated current draw is within the inverter's limits. Operating time will vary depending upon the type, capacity charge level of the battery, and the power draw of the AC products you are using. With a normal vehicle battery and a 100 watt load (such as a small television) you can expect an operating time of 2 to 3 hours. It is recommended that you start your vehicle once an hour when using the RPPD750 for extended periods of time to prevent draining the battery.

WARNING: To prevent personal injury or loss of life, never start or leave your engine running in a poorly ventilated area such as a garage.

Helpful formulas:

To Convert AMPS to WATTS: $AMPS \times VOLTS = WATTS$

To Convert WATTS to AMPS: $WATTS \div VOLTS = AMPS$

These formulas yield a close approximation of the continuous loads of a product.

To calculate approximate Startup Load:

Multiply: $WATTS \times 2 = Starting Load$

This formula yields a close approximation of the starting load of the appliance, although some may require an even greater starting load. **NOTE:** Induction motors such as air conditioners, refrigerators, freezers and pumps may have a start up surge of 3 to 7 times the continuous rating. Most often the start up load of the appliance or power tool determines whether an inverter has the capability to power it.

For example: You have a freezer with a continuous load of 4 amps, and a start up load of 12 amps:

4 amps x 120 volts = 480 watts continuous, 12 amps x 120 volts = 1440 watts starting load

You would need an inverter with peak-surge rating greater than 1440 watts to run this appliance.

FORMULA to convert AC Watts to DC Amps:

AC Watts divided by 12 x 1.1 = DC Amps

This is the size vehicle alternator you would need to keep up with a specific load; for example, to keep up with a continuous draw of 1000 watts, you would need a 91 amp alternator.

To calculate the total watt-hours of energy consumption:

Multiply the power by the operating time. To determine how many 12-volt amp hours will be consumed, divide the watt hours by 10.

Example: 150 Watts x 1 Hour = 150 Watt Hours

150 Watt Hours ÷ 10 = 15 12 Volt Amp Hour

Estimated Watts Used by Common Appliances and Tools

Appliance	Approx. Watts
12" 3 speed fan	230
VCR	40-60
CD or DVD player	35
SONY PS3	360
Xbox Console	100
LCD television	50 » 150
Laptop computer	150

Specifications:

Operating AC Voltage (Normal)	105~125-Volts AC
DC Input Voltage	10~15-Volts DC
Continuous AC Power Output	750 Watts
USB Output	5 Volts DC
Maximum AC Power Output (Surge)	1500 Watts
AC Output Frequency	60Hz \pm 2Hz
AC Output Waveform	Modified Sine Wave
Battery Drain with No AC Load	0.50 Amps
Efficiency (Maximum)	87%
Ambient Operating Temperature Range	14°F (-10°C) ~ 104°F (40°C)
Low Battery Alarm Trigger	11 \pm 0.3-Volts DC
Low Battery Shut Down Point	10.5 \pm 0.3-Volts DC
High Voltage Shut Down Point	15.5 \pm 0.5-Volts DC

Specifications Subject to Change without Notice

Problem/Symptom	Possible Causes	Solution
Low output voltage	Overloaded	Reduce the load.
No output voltage Red LED illuminated Alarm sounding	Low input Voltage	Recharge battery. Check connections and cable. Continuous operation input current required.
Thermal shutdown	Overloaded	Allow inverter to cool off. Reduce load. Improve ventilation; make sure ventilation openings in the inverter are not obstructed. Reduce ambient temperature.
No output voltage Red LED illuminated Alarm sounding	High input voltage	Make sure the inverter is connected to a 12V battery. Check regulation of charging systems
No output voltage Red LED illuminated No alarm	Short circuit	Check load for proper operation. Inspect cables from battery.
No output voltage	Inverter switched off No power to inverter Reverse DC polarity	Turn inverter on Check wiring to inverter. Observe correct polarity (black to black/red to red). Inspect cables from battery.
Low battery alarm on all the time	Poor DC wiring Poor battery condition	Check connections. Make sure sure battery is fully charged.

This Limited One Year Warranty from POWERDRIVE, a DAS brand, applies to all electronic products and devices manufactured by DAS Distributors and sold under the brand name POWERDRIVE.

Terms of the Warranty:

POWERDRIVE warrants that the product you have purchased from a DAS authorized retailer is free from defects in materials and workmanship under normal use during the warranty period. The warranty period begins on the day of retail sale. This warranty extends only to the original purchaser. It is not transferable to anyone who subsequently receives the product. It excludes all expendable parts (fuses, etc). During the warranty period POWERDRIVE will repair your defective product, replace it with an identical item, or at our option exchange it for an equivalent product of value and performance. This Limited Warranty does not extend to any product that has been damaged or rendered defective as a result of: an accident, misuse or abuse, as a result of an act of God, by operation outside the usage parameters stated in this manual, by modification of the product, attempted repair, or as a result of war or terrorist attack. Other limitations of this warranty exclude; payment for your lost time, loss of use of your product, or property damage caused by the product or its failure to work, or any other incidental or consequential damages including personal injury. Except as expressly set forth in this warranty statement, POWERDRIVE makes no other warranties expressed or implied. Defective products must be returned to the dealer within 30 days, after 30 days, the product may be returned to POWERDRIVE.

When returning products to POWERDRIVE: Shipping to POWERDRIVE shall be prepaid, your replacement will be mailed back to you at no additional charge. Carefully pack product and all included accessories into a suitable box, along with original dated register receipt or invoice, a letter stating the defect, daytime phone number, and a physical return address. (UPS will not deliver to a PO Box.)

- Any package with a PO Box address will not be processed, and will be held until further notification from you.
- Make sure you can track your shipment to us. POWERDRIVE will not be responsible for lost packages.
- POWERDRIVE will not be responsible for damage incurred during shipment to us.
- Failure to provide a dated proof of purchase will invalidate warranty.

Ship to:

POWERDRIVE Returns

1875 Zeager Road, Elizabethtown, PA 17022

For customer assistance and technical support call 1-866-622-7979 Monday through Friday 8:00am to 5:00pm Eastern Time. Or write to: techsupport@roadprobrands.com



**POWERDRIVE™ POWER
INVERTERS**

1875 Zeager Road, Elizabethtown, PA 17022

© POWERDRIVE